

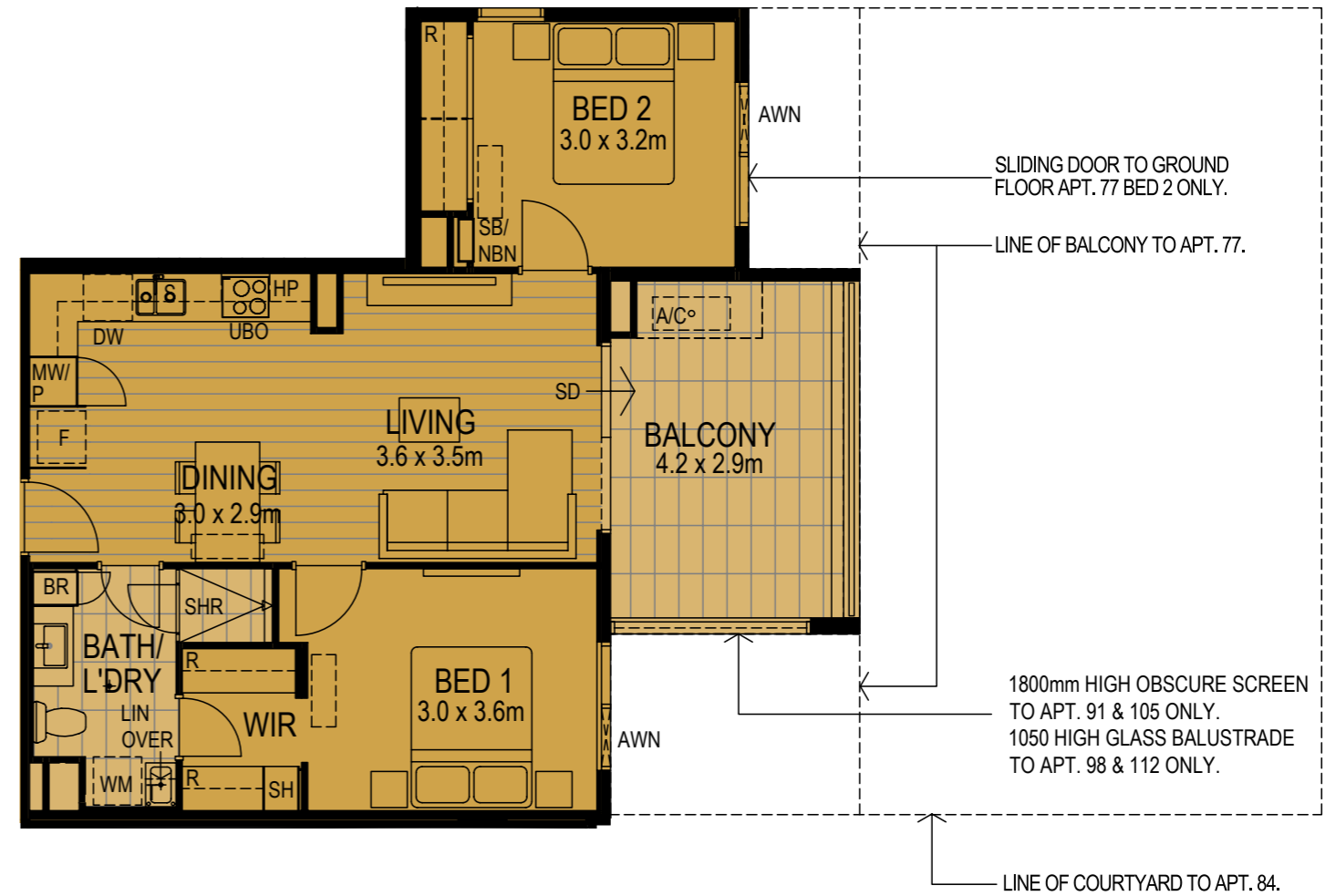
TYPE C

2 BED 1 BATH

STRATA LOT & APT No.	APT. TYPE	APARTMENT DESCRIPTION	FLOOR LEVEL	APARTMENT AREA (m ²)	BALCONY AREA (m ²)	COURTYARD/ DECK (m ²)	SINGLE CARBAYS	CARBAYS AREA (m ²)	STORE AREA (m ²)	TOTAL AREA (m ²)
77	C	2 BED / 1 BATH	G	65	23	0	1	13	4	105
84	C	2 BED / 1 BATH	G	65	0	95	1	13	4	177
91	C	2 BED / 1 BATH	1	65	12	0	1	13	4	94
98	C	2 BED / 1 BATH	1	65	12	0	1	13	4	94
105	C	2 BED / 1 BATH	2	65	12	0	1	13	4	94
112	C	2 BED / 1 BATH	2	65	12	0	1	13	4	94

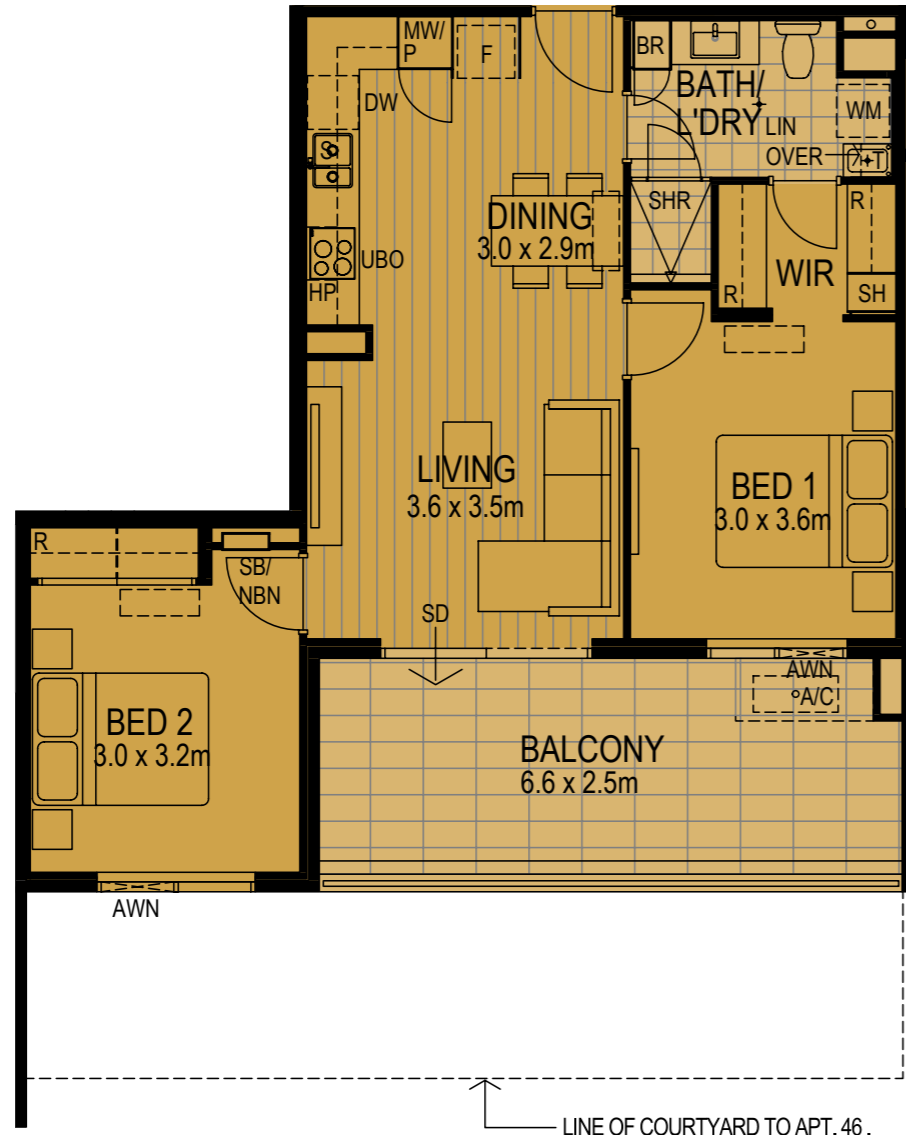
General Notes:

- The apartment areas shown here are approximate and are measured to :
 - The outside face of external walls.
 - The outside face of walls between apartment & Lobby.
 - The middle of party walls
- These area measurements are 'architectural measurements' as defined in the contract conditions.
- Shape and configuration of balconies, doors, windows, ducts and columns may differ from those illustrated.
- Refer to detailed apartment layouts included in the sales contract document for variations to layout & balconies.
- Indicates wall mount split unit air-conditioner.
- Indicates A/C condenser + screen.



TYPE C | 2 BED / 1 BATH





TYPE C1 | 2 BED / 1 BATH



TYPE C1

2 BED 1 BATH

STRATA LOT & APT No.	APT. TYPE	APARTMENT DESCRIPTION	FLOOR LEVEL	APARTMENT AREA (m ²)	BALCONY AREA (m ²)	COURTYARD/DECK (m ²)	SINGLE CARBAYS	CARBAYS AREA (m ²)	STORE AREA (m ²)	TOTAL AREA (m ²)
46	C1	2 BED / 1 BATH	G	65	0	38	1	13	4	120
61	C1	2 BED / 1 BATH	1	65	16	0	1	13	5	99
76	C1	2 BED / 1 BATH	2	65	16	0	1	13	4	98

General Notes:

- The apartment areas shown here are approximate and are measured to :
 - The outside face of external walls.
 - The outside face of walls between apartment & Lobby.
 - The middle of party walls
- These area measurements are 'architectural measurements' as defined in the contract conditions.
- Shape and configuration of balconies, doors, windows, ducts and columns may differ from those illustrated.
- Refer to detailed apartment layouts included in the sales contract document for variations to layout & balconies.
- Indicates wall mount split unit air-conditioner.
- Indicates A/C condenser + screen.

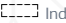

TYPE C2

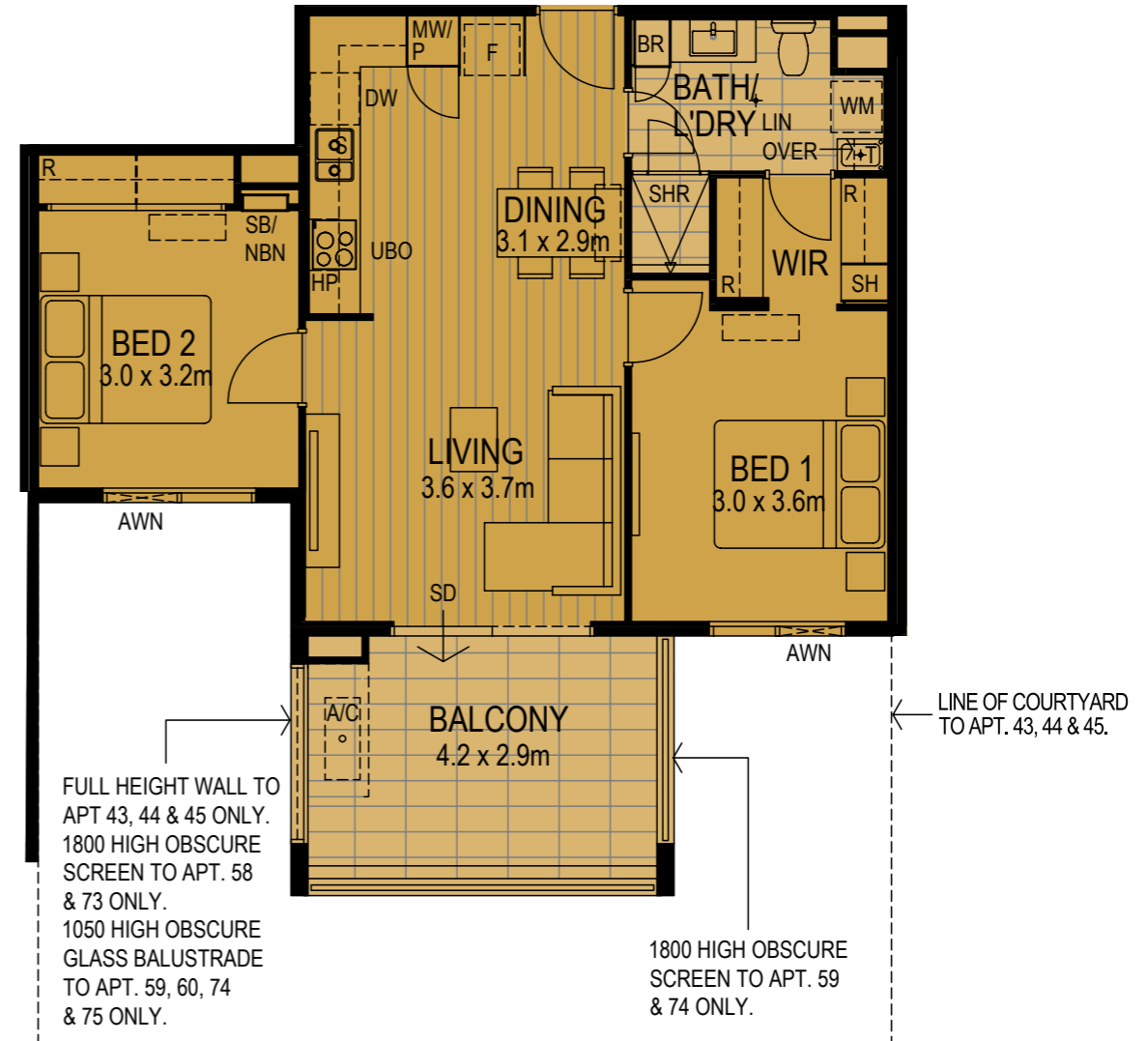
2 BED 1 BATH

STRATA LOT & APT No.	APT. TYPE	APARTMENT DESCRIPTION	FLOOR LEVEL	APARTMENT AREA (m ²)	BALCONY AREA (m ²)	COURTYARD/DECK (m ²)	SINGLE CARBAYS	CARBAYS AREA (m ²)	STORE AREA (m ²)	TOTAL AREA (m ²)
43	C2	2 BED / 1 BATH	G	65	0	52	1	13	4	134
44*	C2	2 BED / 1 BATH	G	65	0	52	1	13	4	134
45	C2	2 BED / 1 BATH	G	65	0	52	1	13	4	134
58	C2	2 BED / 1 BATH	1	65	12	0	1	13	4	94
59*	C2	2 BED / 1 BATH	1	65	12	0	1	13	4	94
60	C2	2 BED / 1 BATH	1	65	12	0	1	13	4	94
73	C2	1 BED / 1 BATH	2	65	12	0	1	13	4	94
74*	C2	1 BED / 1 BATH	2	65	12	0	1	13	4	94
75	C2	1 BED / 1 BATH	2	65	12	0	1	13	4	94

* - INDICATES APARTMENT UNITS WHICH ARE MIRRORED.

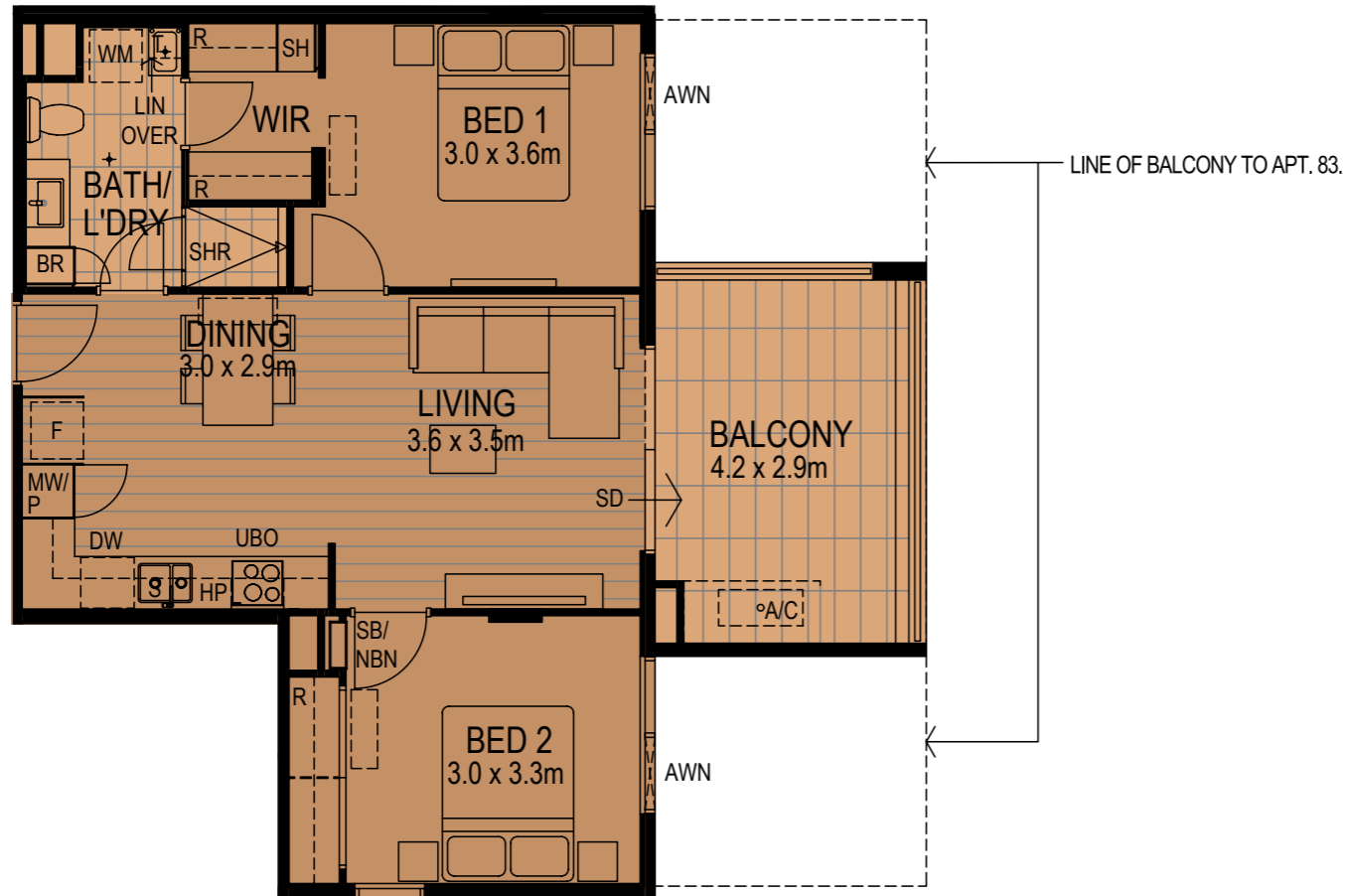
General Notes:

- The apartment areas shown here are approximate and are measured to :
 - The outside face of external walls.
 - The outside face of walls between apartment & Lobby.
 - The middle of party walls
- These area measurements are 'architectural measurements' as defined in the contract conditions.
- Shape and configuration of balconies, doors, windows, ducts and columns may differ from those illustrated.
- Refer to detailed apartment layouts included in the sales contract document for variations to layout & balconies.
-  Indicates wall mount split unit air-conditioner.
-  indicates A/C condenser + screen.



TYPE C2 | 2 BED / 1 BATH





TYPE D | 2 BED / 1 BATH



TYPE D

2 BED 1 BATH

STRATA LOT & APT No.	APT. TYPE	APARTMENT DESCRIPTION	FLOOR LEVEL	APARTMENT AREA (m ²)	BALCONY AREA (m ²)	COURTYARD/DECK (m ²)	SINGLE CARBAYS	CARBAYS AREA (m ²)	STORE AREA (m ²)	TOTAL AREA (m ²)
83	D	2 BED / 1 BATH	G	64	29	0	1	13	4	110
97	D	2 BED / 1 BATH	1	64	12	0	1	13	4	93
111	D	2 BED / 1 BATH	2	64	12	0	1	13	4	93

General Notes:



- The apartment areas shown here are approximate and are measured to:
 - The outside face of external walls.
 - The outside face of walls between apartment & Lobby.
 - The middle of party walls
- These area measurements are 'architectural measurements' as defined in the contract conditions.
- Shape and configuration of balconies, doors, windows, ducts and columns may differ from those illustrated.
- Refer to detailed apartment layouts included in the sales contract document for variations to layout & balconies.
- Indicates wall mount split unit air-conditioner.
- Indicates A/C condenser + screen.

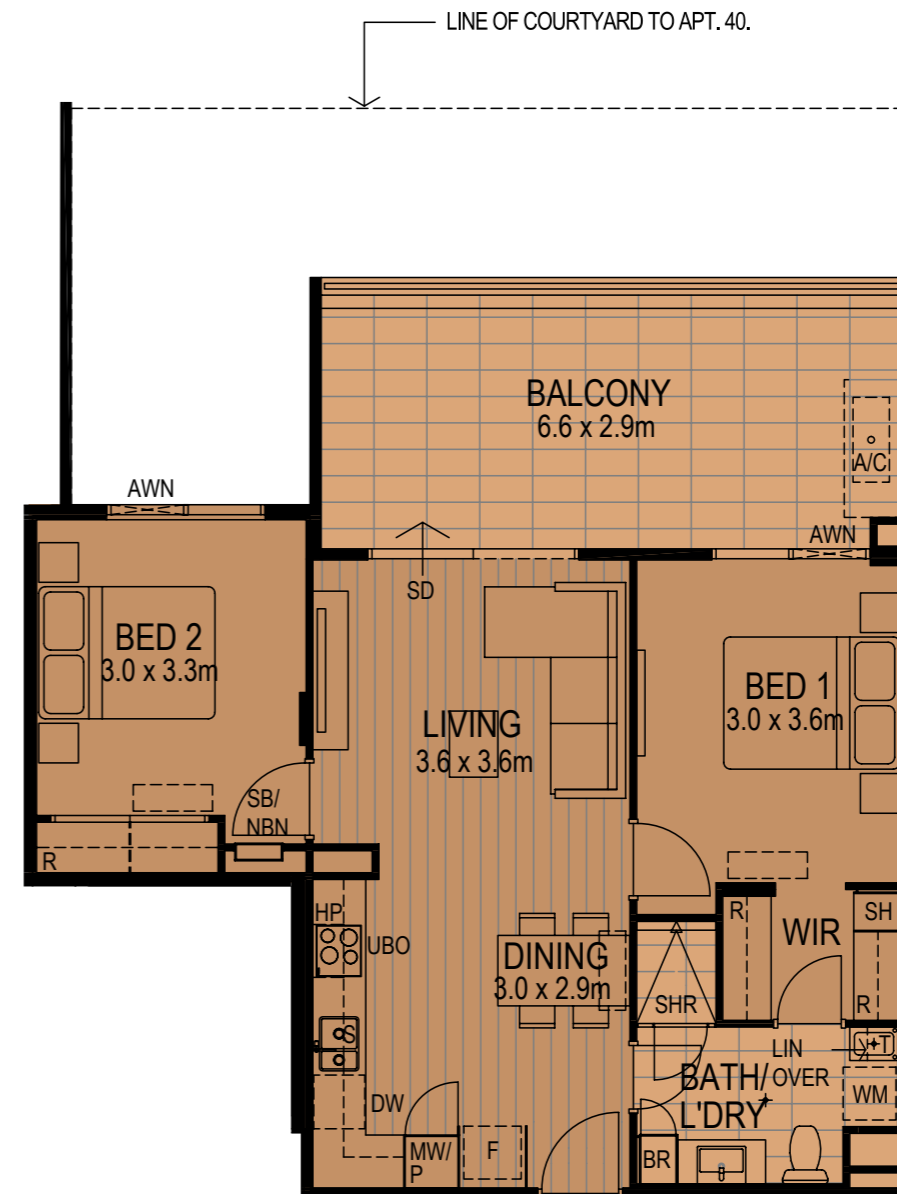
TYPE D1

2 BED 1 BATH

STRATA LOT & APT No.	APT. TYPE	APARTMENT DESCRIPTION	FLOOR LEVEL	APARTMENT AREA (m ²)	BALCONY AREA (m ²)	COURTYARD/DECK (m ²)	SINGLE CARBAYS	CARBAYS AREA (m ²)	STORE AREA (m ²)	TOTAL AREA (m ²)
40	D1	2 BED / 1 BATH	G	65	0	45	1	13	4	127
52	D1	2 BED / 1 BATH	1	65	19	0	1	13	4	101
67	D1	2 BED / 1 BATH	2	65	19	0	1	13	5	102

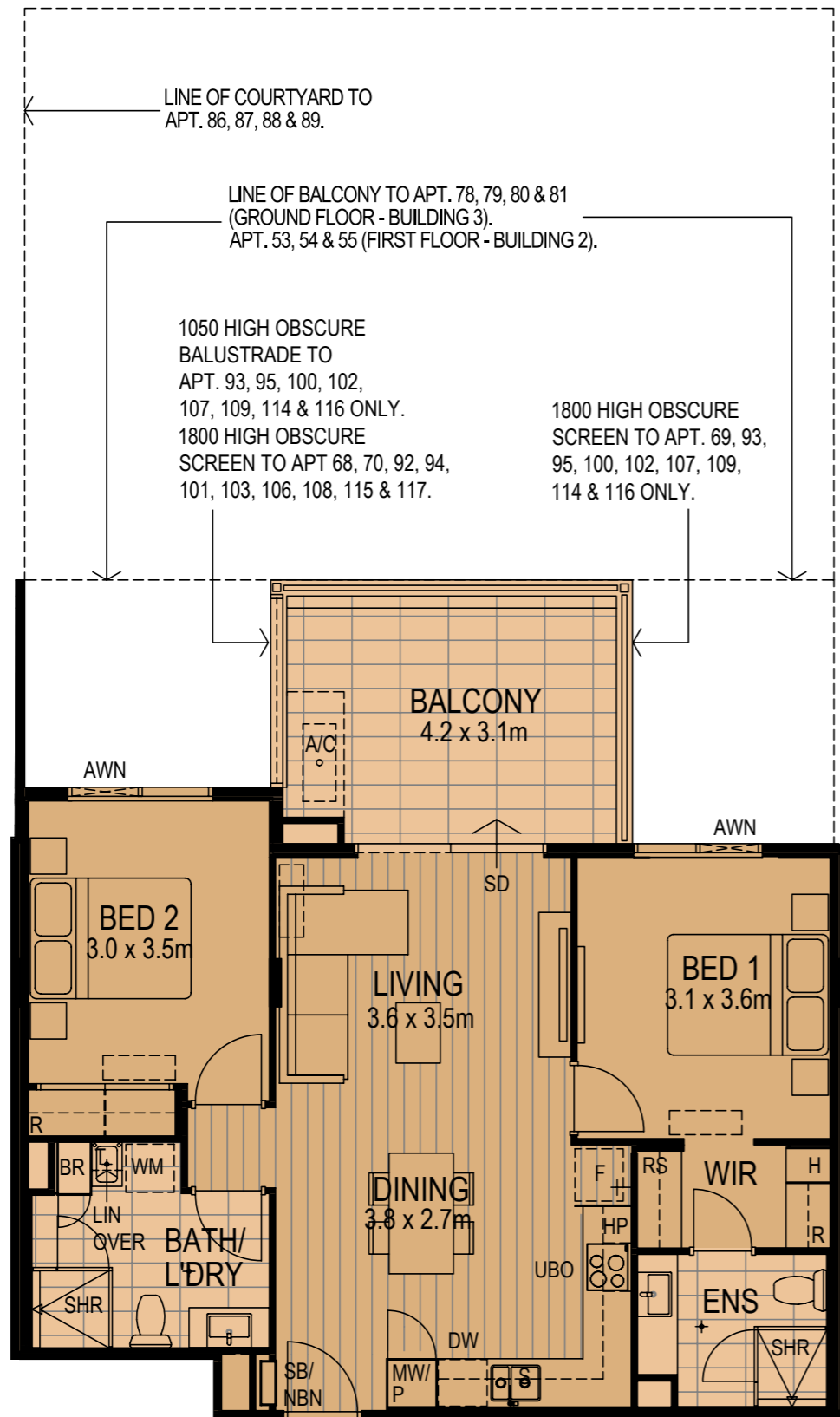
General Notes:

- The apartment areas shown here are approximate and are measured to :
 - The outside face of external walls.
 - The outside face of walls between apartment & Lobby.
 - The middle of party walls
- These area measurements are 'architectural measurements' as defined in the contract conditions.
- Shape and configuration of balconies, doors, windows, ducts and columns may differ from those illustrated.
- Refer to detailed apartment layouts included in the sales contract document for variations to layout & balconies.
-  Indicates wall mount split unit air-conditioner.
-  indicates A/C condenser + screen.



TYPE D1 | 2 BED / 1 BATH





TYPE E | 2 BED / 2 BATH



TYPE E

2 BED 2 BATH

STRATA LOT & APT No.	APT. TYPE	APARTMENT DESCRIPTION	FLOOR LEVEL	APARTMENT AREA (m ²)	BALCONY AREA (m ²)	COURTYARD/DECK (m ²)	SINGLE CARBAYS	TANDEM CARBAYS	CARBAYS AREA (m ²)	STORE AREA (m ²)	TOTAL AREA (m ²)
53	E	2 BED / 2 BATH	1	74	29	0	1	0	13	4	120
54*	E	2 BED / 2 BATH	1	74	29	0	1	0	13	4	120
55	E	2 BED / 2 BATH	1	74	29	0	1	0	13	4	120
68	E	2 BED / 2 BATH	2	74	13	0	1	0	13	4	104
69*	E	2 BED / 2 BATH	2	74	13	0	1	0	13	4	104
70	E	2 BED / 2 BATH	2	74	13	0	1	0	13	4	104
78*	E	2 BED / 2 BATH	G	74	29	0	1	0	13	4	120
79	E	2 BED / 2 BATH	G	74	29	0	1	0	13	4	120
80*	E	2 BED / 2 BATH	G	74	29	0	1	0	13	5	121
81	E	2 BED / 2 BATH	G	74	29	0	1	0	13	4	120
86*	E	2 BED / 2 BATH	G	74	0	102	0	2	25	4	205
87	E	2 BED / 2 BATH	G	74	0	102	0	2	25	4	205
88*	E	2 BED / 2 BATH	G	74	0	102	0	2	25	4	205
89	E	2 BED / 2 BATH	G	74	0	102	0	2	25	4	205
92*	E	2 BED / 2 BATH	1	74	13	0	1	0	13	4	104
93	E	2 BED / 2 BATH	1	74	13	0	1	0	13	5	105
94*	E	2 BED / 2 BATH	1	74	13	0	1	0	13	4	104
95	E	2 BED / 2 BATH	1	74	13	0	1	0	13	4	104
100*	E	2 BED / 2 BATH	1	74	13	0	0	2	25	4	116
101	E	2 BED / 2 BATH	1	74	13	0	0	2	25	4	116
102*	E	2 BED / 2 BATH	1	74	13	0	0	2	25	4	116
103	E	2 BED / 2 BATH	1	74	13	0	0	2	25	4	116
106*	E	2 BED / 2 BATH	2	74	13	0	1	0	13	5	105
107	E	2 BED / 2 BATH	2	74	13	0	1	0	13	4	104
108*	E	2 BED / 2 BATH	2	74	13	0	1	0	13	4	104
109	E	2 BED / 2 BATH	2	74	13	0	1	0	13	4	104
114*	E	2 BED / 2 BATH	2	74	13	0	0	2	25	4	116
115	E	2 BED / 2 BATH	2	74	13	0	0	2	25	4	116
116*	E	2 BED / 2 BATH	2	74	13	0	0	2	25	4	116
117	E	2 BED / 2 BATH	2	74	13	0	0	2	25	4	116

* - INDICATES APARTMENT UNITS WHICH ARE MIRRORED.

General Notes:

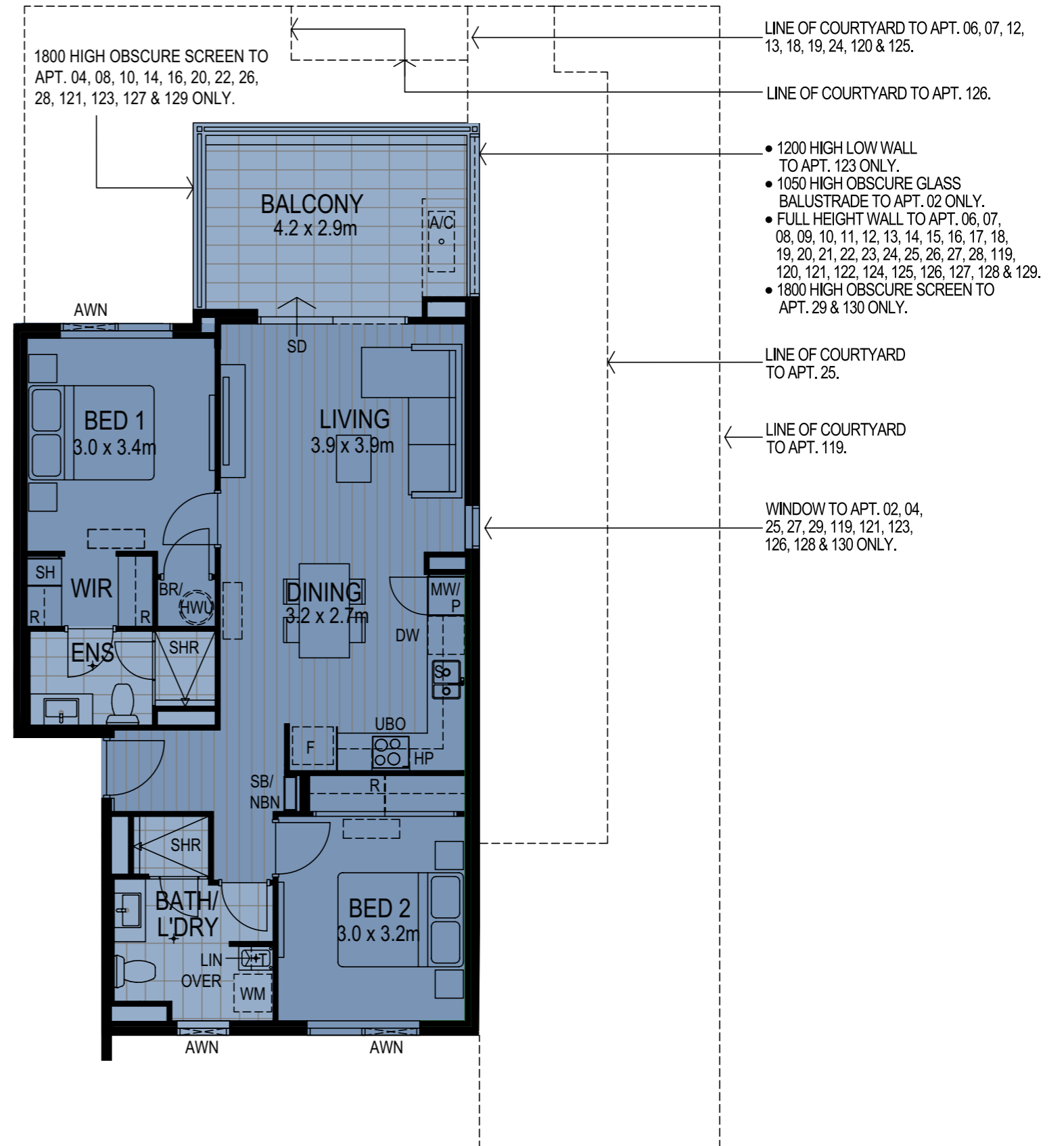
- The apartment areas shown here are approximate and are measured to :
- The outside face of external walls.
- The outside face of walls between apartment & Lobby.
- The middle of party walls
- These area measurements are 'architectural measurements' as defined in the contract conditions.
- Shape and configuration of balconies, doors, windows, ducts and columns may differ from those illustrated.
- Refer to detailed apartment layouts included in the sales contract document for variations to layout & balconies.
- Indicates wall mount split unit air-conditioner.
- Indicates A/C condenser + screen.

TYPE F

2 BED 2 BATH

STRATA LOT & APT No.	APT. TYPE	APARTMENT DESCRIPTION	FLOOR LEVEL	APARTMENT AREA (m ²)	BALCONY AREA (m ²)	COURTYARD/DECK (m ²)	SINGLE CARBAYS	CARBAYS AREA (m ²)	STORE AREA (m ²)	TOTAL AREA (m ²)
2*	F	2 BED / 2 BATH	1	75	12	0	1	13	5	105
4*	F	2 BED / 2 BATH	2	75	12	0	1	13	4	104
6*	F	2 BED / 2 BATH	G	75	0	35	1	13	4	127
7	F	2 BED / 2 BATH	G	75	0	35	1	13	4	127
8*	F	2 BED / 2 BATH	1	75	12	0	1	13	4	104
9	F	2 BED / 2 BATH	1	75	12	0	1	13	4	104
10*	F	2 BED / 2 BATH	2	75	12	0	1	13	4	104
11	F	2 BED / 2 BATH	2	75	12	0	1	13	4	104
12*	F	2 BED / 2 BATH	G	75	0	35	1	13	4	127
13	F	2 BED / 2 BATH	G	75	0	35	1	13	4	127
14*	F	2 BED / 2 BATH	1	75	12	0	1	13	4	104
15	F	2 BED / 2 BATH	1	75	12	0	1	13	5	105
16*	F	2 BED / 2 BATH	2	75	12	0	1	13	5	105
17	F	2 BED / 2 BATH	2	75	12	0	1	13	4	104
18*	F	2 BED / 2 BATH	G	75	0	35	1	13	4	127
19	F	2 BED / 2 BATH	G	75	0	35	1	13	4	127
20*	F	2 BED / 2 BATH	1	75	12	0	1	13	4	104
21	F	2 BED / 2 BATH	1	75	12	0	1	13	5	105
22*	F	2 BED / 2 BATH	2	75	12	0	1	13	5	105
23	F	2 BED / 2 BATH	2	75	12	0	1	13	4	104
24*	F	2 BED / 2 BATH	G	75	0	35	1	13	4	127
25	F	2 BED / 2 BATH	G	75	0	61	1	13	4	153
26*	F	2 BED / 2 BATH	1	75	12	0	1	13	5	105
27	F	2 BED / 2 BATH	1	75	12	0	1	13	5	105
28*	F	2 BED / 2 BATH	2	75	12	0	1	13	4	104
29	F	2 BED / 2 BATH	2	75	12	0	1	13	4	104
119*	F	2 BED / 2 BATH	G	75	0	105	1	13	4	197
120	F	2 BED / 2 BATH	G	75	0	35	1	13	4	127
121*	F	2 BED / 2 BATH	1	75	12	0	1	13	4	104
122	F	2 BED / 2 BATH	1	75	12	0	1	13	5	105
123*	F	2 BED / 2 BATH	2	75	12	0	1	13	4	104
124	F	2 BED / 2 BATH	2	75	12	0	1	13	4	104
125*	F	2 BED / 2 BATH	G	75	0	35	1	13	4	127
126	F	2 BED / 2 BATH	G	75	0	32	1	13	4	124
127*	F	2 BED / 2 BATH	1	75	12	0	1	13	5	105
128	F	2 BED / 2 BATH	1	75	12	0	1	13	4	104
129*	F	2 BED / 2 BATH	2	75	12	0	1	13	5	105
130	F	2 BED / 2 BATH	2	75	12	0	1	13	5	105

* - INDICATES APARTMENT UNITS WHICH ARE MIRRORED.



TYPE F | 2 BED / 2 BATH

